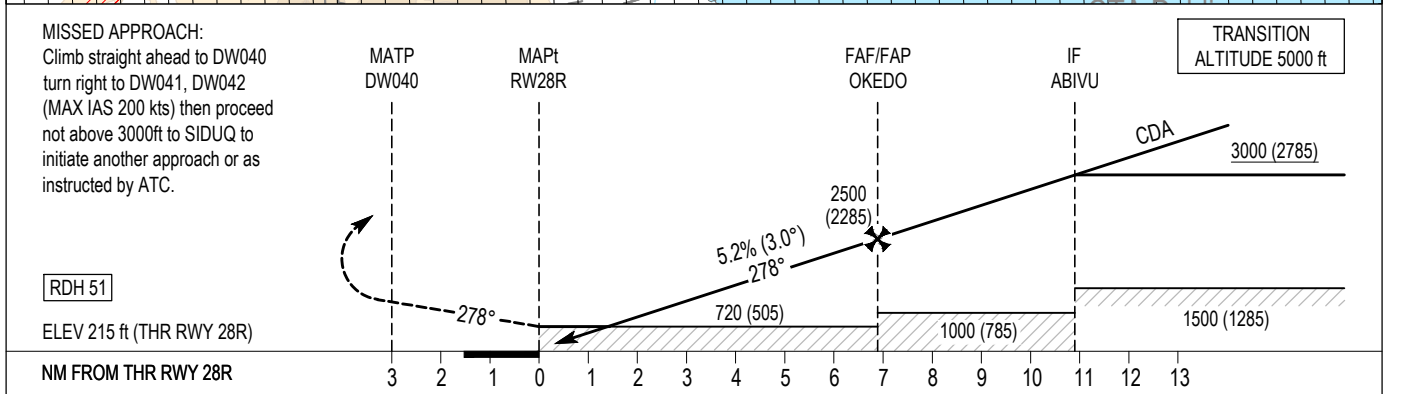
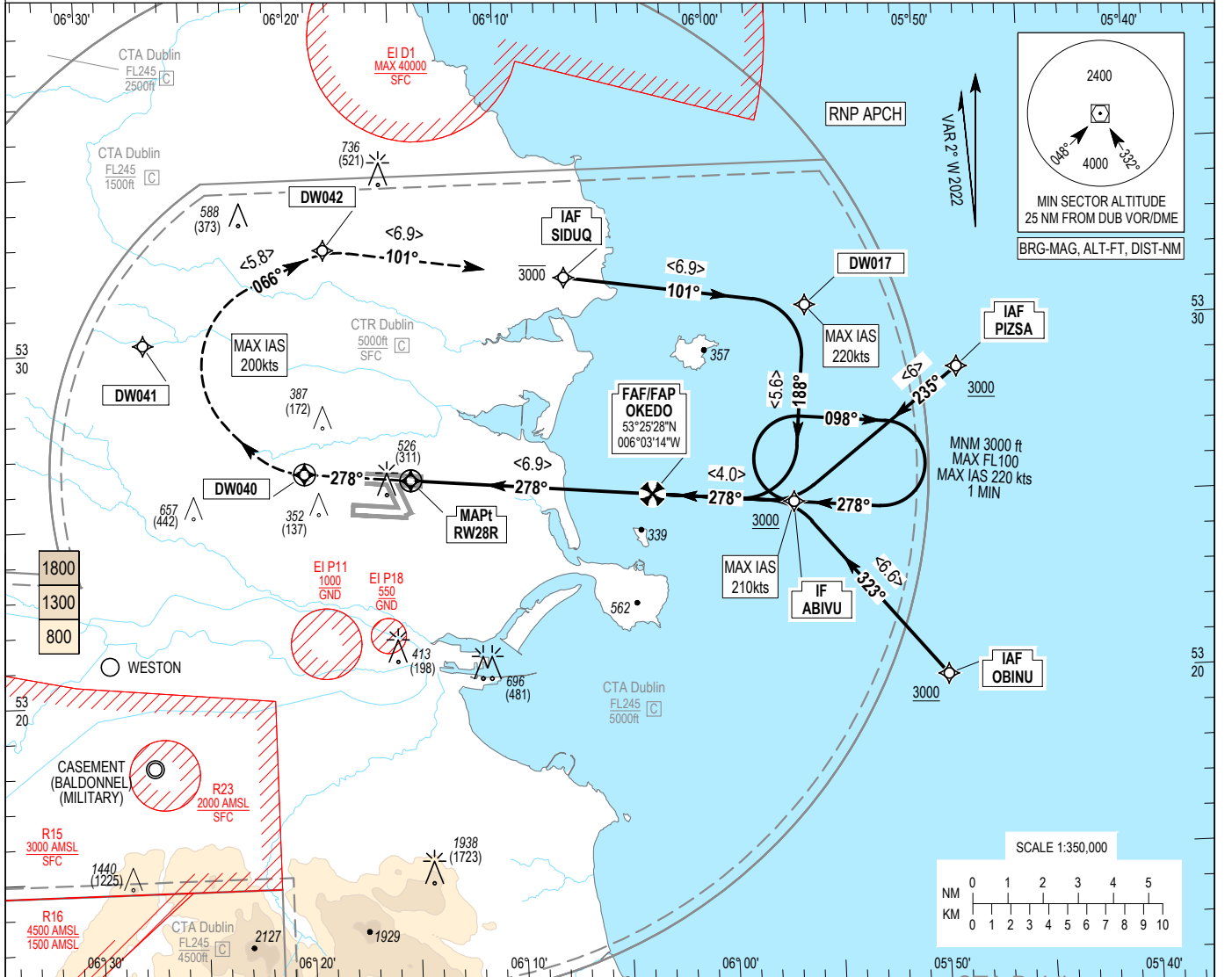


<p><b>INSTRUMENT APPROACH CHART- ICAO</b></p>	<p><b>AERODROME ELEV 243 ft</b> HEIGHTS RELATED TO THR RWY 28R - ELEV 215 ft</p>	<table border="1" style="width:100%; border-collapse: collapse;"> <tr><td>ATIS ARR</td><td>124.530</td></tr> <tr><td>APP</td><td>121.100</td></tr> <tr><td>FINALS</td><td>119.930</td></tr> <tr><td>TWR NTH</td><td>124.680</td></tr> <tr><td>GND NTH</td><td>125.855</td></tr> </table>	ATIS ARR	124.530	APP	121.100	FINALS	119.930	TWR NTH	124.680	GND NTH	125.855	<table border="1" style="width:100%; border-collapse: collapse;"> <tr><td>SBAS</td><td>CH 74379</td></tr> <tr><td>E28B</td><td></td></tr> </table>	SBAS	CH 74379	E28B		<p><b>DUBLIN/DUBLIN RNP RWY 28R</b> (ACFT A, B, C, D) MNM TEMP -10°C (BARO VNAV) MAX TEMP 50°C (BARO VNAV)</p>
ATIS ARR	124.530																	
APP	121.100																	
FINALS	119.930																	
TWR NTH	124.680																	
GND NTH	125.855																	
SBAS	CH 74379																	
E28B																		



<b>OCA (H)</b>	<b>A</b>	<b>B</b>	<b>C</b>	<b>D</b>	<b>NOTE:</b> 1. Pilots should request RNP Approach on first contact with APCH.			
LNAV	720 (505)							
LNAV / VNAV	550 (335)	580 (365)	600 (385)		<b>Recommended LNAV Profile on Final Approach</b>			
LPV	581 (366)	591 (376)	600 (385)	610 (395)				
Visual Manoeuvring (Heights AAL)	830 (588)		1100 (858)					
	DIST from THR (NM)		2	3	4	5	6	
	ALT / HT (ft)		900 (685)	1220 (1005)	1540 (1325)	1855 (1640)	2175 (1960)	
Ground Speed		kts	80	100	110	120	140	160
Descent rate gradient - 5.2% (3.0°) 318 ft/NM		ft / min	430	530	580	640	740	850

CHANGE: Verso Page Mag TRK 235°.

### Dublin RNP RWY 28R via SIDUQ

Nav. Spec.	WPT Name	Latitude (N)/ Longitude (W)	Path Term	Fly-By Fly-over	True track / Mag track	Distance (NM)	Upper limit / Lower limit	Speed Limit (kts)	VPA (°) / TCH (ft)	Remarks
RNP APCH	SIDUQ	533142.4 / 0060703.6	IF	-	-	-	- / +A3000	-	-	-
RNP APCH	DW017	533039.7 / 0055538.6	TF	Fly-By	098.7 / 101	6.9	-	220	-	-
RNP APCH	ABIVU	532505.7 / 0055631.5	TF	Fly-By	185.4 / 188	5.6	- / +A3000	210	-	Turn R
RNP APCH	OKEDO	532528.2 / 0060314.0	TF	Fly-By	275.4 / 278	4.0	-	-	-	Turn R
RNP APCH	RW28R	532606.7 / 0061441.9	TF	Fly-Over	275.4 / 278	6.9	-	-	-	3.00 / 51
RNP APCH	DW040	532623.8 / 0061944.4	CF	Fly-Over	275.4 / 278	-	-A3000 / -	200	-	R318 D1.4 DAP
RNP APCH	DW041	533011.9 / 0062712.8	DF	Fly-By	-	-	-A3000 / -	200	-	Turn R
RNP APCH	DW042	533244.1 / 0061829.1	TF	Fly-By	063.9 / 066	5.8	-A3000 / -	200	-	Turn R
RNP APCH	SIDUQ	533142.4 / 0060703.6	TF	Fly-By	098.5 / 101	6.9	-A3000 / -	-	-	Turn R

### Dublin RNP RWY 28R via PIZSA

Nav. Spec.	WPT Name	Latitude (N)/ Longitude (W)	Path Term	Fly-By Fly-over	True track / Mag track	Distance (NM)	Upper limit / Lower limit	Speed Limit (kts)	VPA (°) / TCH (ft)	Remarks
RNP APCH	PIZSA	532844.3 / 0054833.6	IF	-	-	-	- / +A3000	-	-	-
RNP APCH	ABIVU	532505.7 / 0055631.5	TF	Fly-By	232.6 / 235	6.0	- / +A3000	210	-	-
RNP APCH	OKEDO	532528.2 / 0060314.0	TF	Fly-By	275.4 / 278	4.0	-	-	-	Turn R
RNP APCH	RW28R	532606.7 / 0061441.9	TF	Fly-Over	275.4 / 278	6.9	-	-	-	-
RNP APCH	DW040	532623.8 / 0061944.4	CF	Fly-Over	275.4 / 278	-	-A3000 / -	200	3.00 / 51	R318 D1.4 DAP
RNP APCH	DW041	533011.9 / 0062712.8	DF	Fly-By	-	-	-A3000 / -	200	-	Turn R
RNP APCH	DW042	533244.1 / 0061829.1	TF	Fly-By	063.9 / 066	5.8	-A3000 / -	200	-	Turn R
RNP APCH	SIDUQ	533142.4 / 0060703.6	TF	Fly-By	098.5 / 101	6.9	-A3000 / -	-	-	Turn R

### Dublin RNP RWY 28R via OBINU

Nav. Spec.	WPT Name	Latitude (N)/ Longitude (W)	Path Term	Fly-By Fly-over	True track / Mag track	Distance (NM)	Upper limit / Lower limit	Speed Limit (kts)	VPA (°) / TCH (ft)	Remarks
RNP APCH	OBINU	532001.7 / 0054931.2	IF	-	-	-	- / +A3000	-	-	-
RNP APCH	ABIVU	532505.7 / 0055631.5	TF	Fly-By	320.5 / 323	6.6	- / +A3000	210	-	-
RNP APCH	OKEDO	532528.2 / 0060314.0	TF	Fly-By	275.4 / 278	4.0	-	-	-	Turn L
RNP APCH	RW28R	532606.7 / 0061441.9	TF	Fly-Over	275.4 / 278	6.9	-	-	-	-
RNP APCH	DW040	532623.8 / 0061944.4	CF	Fly-Over	275.4 / 278	-	-A3000 / -	200	3.00 / 51	R318 D1.4 DAP
RNP APCH	DW041	533011.9 / 0062712.8	DF	Fly-By	-	-	-A3000 / -	200	-	Turn R
RNP APCH	DW042	533244.1 / 0061829.1	TF	Fly-By	063.9 / 066	5.8	-A3000 / -	200	-	Turn R
RNP APCH	SIDUQ	533142.4 / 0060703.6	TF	Fly-By	098.5 / 101	6.9	-A3000 / -	-	-	Turn R

### Hold Identification – ABIVU

Holding Fix	Latitude (N) / Longitude (W)	Inbound True Track (degrees)	Inbound Mag Track (degrees)	Maximum Indicated Airspeed (kts)	Minimum Holding Altitude/ Level (FL/ft)	Maximum Holding Altitude/ Level (FL/ft)	Outbound time (min)	Direction of Turn
ABIVU	532505.7 / 0055631.5	275.4	278	220	+A3000	-FL100	1	R

**SBAS FAS Data Block Coding Data**  
**Dublin RNP RWY28R**

<b>Input Data</b>	
Operation Type	0
Service Provider	1 (EGNOS)
Airport Identifier	EIDW
Runway	28
Runway Letter	1 (R)
Approach Performance Designator	0
Route Indicator	
Reference Path Data Selector	0
Reference Path Identifier	E28B
LTP / FTP Latitude	532606.7320N
LTP / FTP Longitude	0061441.8660W
LTP / FTP Ellipsoidal Height	121.1 m
FPAP Latitude	532614.6230N
Delta FPAP Latitude	7.8910 seconds
FPAP Longitude	0061705.3205W
Delta FPAP Longitude	-143.4545 seconds
Threshold Crossing Height	51
TCH Units Selector	0 (feet)
Glidepath Angle	3 °
Course Width	105 m
Length Offset	0 m
HAL	40 m
VAL	35 m
<b>Output Data</b>	
Data Block	10 17 04 09 05 5C 00 00 02 38 32 05 18 91 EE 16 6C E8 51 FD BB 18 A6 3D 00 43 9F FB FE 01 2C 01 64 00 C8 AF 60 E3 1D 4A
Calculated CRC Value	60E31D4A
<b>Required Additional Data</b>	
ICAO Code	EI
LTP/FTP Orthometric Height	65.5 m
SBAS EGNOS Channel	74379