

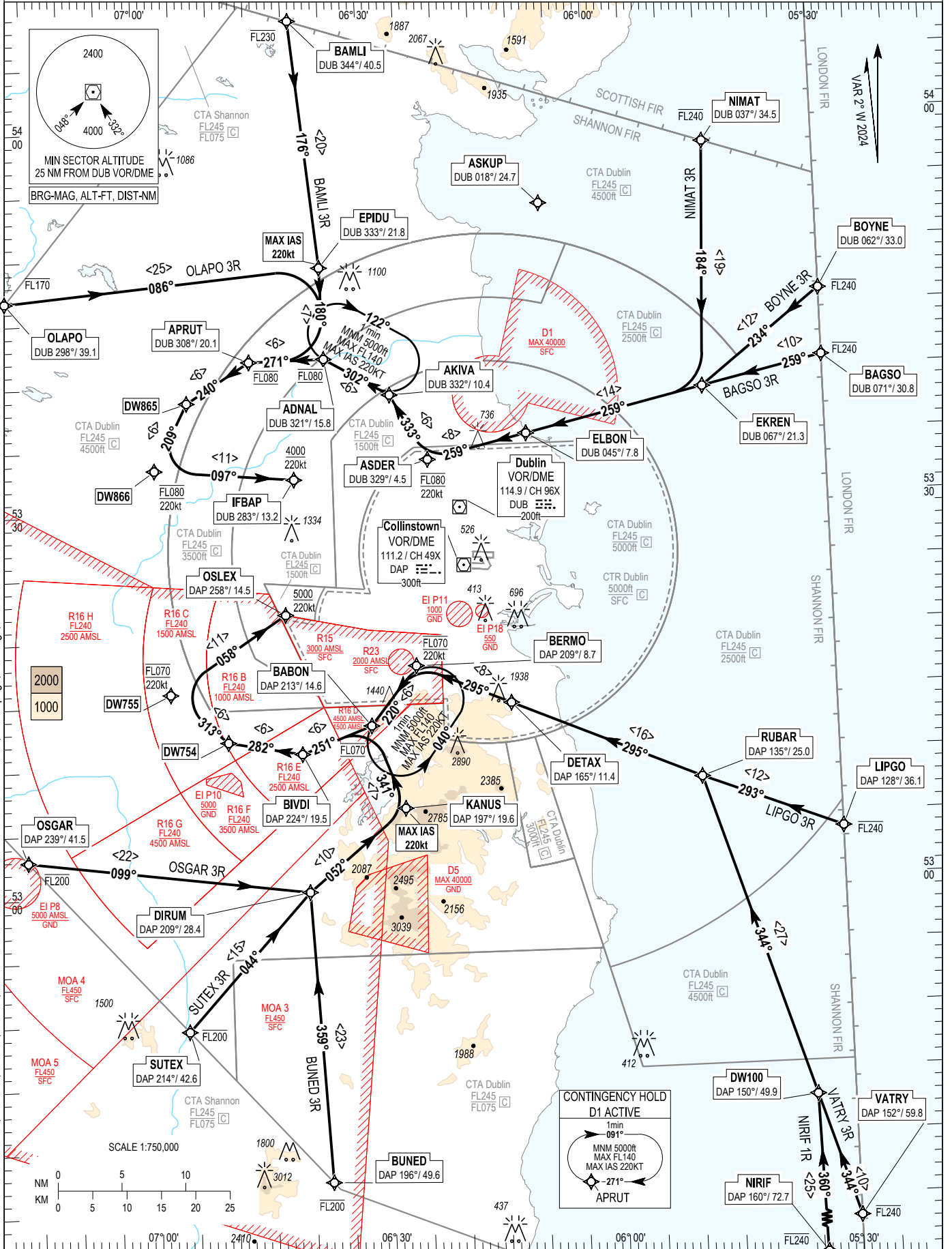
RNAV STANDARD ARRIVAL CHART  
INSTRUMENT (STAR) - ICAO

TRANS ALT 5000ft  
TRANS LEVEL by ATC

ATIS APP	124.530	ACC Upper North	129.180
	121.100	ACC Upper South	135.655
		ACC Lower North	132.580
		ACC Lower South	120.755

DUBLIN RWY 10 L/R

NIMAT 3R, BOYNE 3R, BAGSO 3R, LIPGO 3R, VATRY 3R,  
BUNED 3R, SUTEX 3R, OSGAR 3R, OLAPGO 3R, BAMLI 3R,  
NIRIF 1R.



**NOTES:** 1. ASKUP may be used tactically by ATC to ensure aircraft routings are clear of EI D1. 2. DME/DME or GNSS navigation required. 3. Aircraft routing via ASKUP that experience radio communication failure should follow the appropriate procedure for the arrival runway remaining clear of EI D1. 4. For Comms Failure Procedures see AIP EIDW AD 2.22 paragraph 5.3.2

**VERTICAL PLANNING INFORMATION:** 1. ACTUAL DESCENT CLEARANCE WILL BE AS DIRECTED BY ATC.

**CAUTION:** 1. Pilots must inform ATC if unable to comply with any level or speed constraint.

CHANGE: Level constraints at - BAGSO, BOYNE, NIMAT, LIPGO, VATRY. Notes Nr. 3 and Nr.4 and NIRIF 1R added. Verso page, Bearings, Grosscheck and MAG VAR amended.

16 MAY 2024

**BAGSO 3R STAR RWY 10L/R**

**BAGS3R**

Nav. Spec.	WPT Name	Latitude (N) / Longitude (W)	Path Term	Fly-By Fly-Over	True track / Mag track (°)	Distance (NM)	Upper limit / Lower limit (ft)	Speed limit (kts)	Remarks
RNAV 1	BAGSO	534048.0 / 0053000.0	IF	-	-	-	-FL240 / -	-	-
RNAV 1	EKREN	533843.0 / 0054553.1	TF	Fly-By	257.7 / 259	9.7	-	-	-
RNAV 1	ELBON	533534.1 / 0060921.6	TF	Fly-By	257.4 / 259	14.3	-	-	-
RNAV 1	ASDER	533346.7 / 0062226.4	TF	Fly-By	257.1 / 259	8.0	FL080 / FL080	220	-
RNAV 1	AKIVA	533856.0 / 0062709.6	TF	Fly-By	331.5 / 333	5.9	FL080 / FL080	220	Turn R
RNAV 1	ADNAL	534153.9 / 0063541.5	TF	Fly-By	300.4 / 302	5.9	FL080 / FL080	220	Turn L
RNAV 1	APRUT	534149.0 / 0064534.9	TF	Fly-By	269.3 / 271	5.9	FL080 / FL080	220	Turn L
RNAV 1	DW865	533842.8 / 0065358.4	TF	Fly-By	238.1 / 240	5.9	FL080 / FL080	220	Turn L
RNAV 1	DW866	533329.1 / 0065827.2	TF	Fly-By	207.0 / 209	5.9	FL080 / FL080	220	Turn L
RNAV 1	IFBAP	533230.8 / 0064006.2	TF	Fly-By	095.0 / 097	11.0	- / +A4000	220	Turn L

**BAMLI 3R STAR RWY 10L/R**

**BAML3R**

Nav. Spec.	WPT Name	Latitude (N) / Longitude (W)	Path Term	Fly-By Fly-Over	True track / Mag track (°)	Distance (NM)	Upper limit / Lower limit (ft)	Speed limit (kts)	Remarks
RNAV 1	BAMLI	540828.5 / 0063904.0	IF	-	-	-	-FL230 / -	-	-
RNAV 1	EPIDU	534903.5 / 0063554.8	TF	Fly-By	174.5 / 176	19.5	-	220	-
RNAV 1	ADNAL	534153.9 / 0063541.5	TF	Fly-By	178.9 / 180	7.2	-	220	-
RNAV 1	APRUT	534149.0 / 0064534.9	TF	Fly-By	269.3 / 271	5.9	FL080 / FL080	220	Turn R
RNAV 1	DW865	533842.8 / 0065358.4	TF	Fly-By	238.1 / 240	5.9	FL080 / FL080	220	Turn L
RNAV 1	DW866	533329.1 / 0065827.2	TF	Fly-By	207.0 / 209	5.9	FL080 / FL080	220	Turn L
RNAV 1	IFBAP	533230.8 / 0064006.2	TF	Fly-By	095.0 / 097	11.0	- / +A4000	220	Turn L

**BOYNE 3R STAR RWY 10L/R**

**BOYN3R**

Nav. Spec.	WPT Name	Latitude (N) / Longitude (W)	Path Term	Fly-By Fly-Over	True track / Mag track (°)	Distance (NM)	Upper limit / Lower limit (ft)	Speed limit (kts)	Remarks
RNAV 1	BOYNE	534601.6 / 0053000.0	IF	-	-	-	-FL240 / -	-	-
RNAV 1	EKREN	533843.0 / 0054553.1	TF	Fly-By	232.3 / 234	11.9	-	-	-
RNAV 1	ELBON	533534.1 / 0060921.6	TF	Fly-By	257.4 / 259	14.3	-	-	Turn R
RNAV 1	ASDER	533346.7 / 0062226.4	TF	Fly-By	257.1 / 259	8.0	-	-	-
RNAV 1	AKIVA	533856.0 / 0062709.6	TF	Fly-By	331.5 / 333	5.9	FL080 / FL080	220	Turn R
RNAV 1	ADNAL	534153.9 / 0063541.5	TF	Fly-By	300.4 / 302	5.9	FL080 / FL080	220	Turn L
RNAV 1	APRUT	534149.0 / 0064534.9	TF	Fly-By	269.3 / 271	5.9	FL080 / FL080	220	Turn L
RNAV 1	DW865	533842.8 / 0065358.4	TF	Fly-By	238.1 / 240	5.9	FL080 / FL080	220	Turn L
RNAV 1	DW866	533329.1 / 0065827.2	TF	Fly-By	207.0 / 209	5.9	FL080 / FL080	220	Turn L
RNAV 1	IFBAP	533230.8 / 0064006.2	TF	Fly-By	095.0 / 097	11.0	- / +A4000	220	Turn L

**BUNED 3R STAR RWY 10L/R**

**BUNE3R**

Nav. Spec.	WPT Name	Latitude (N) / Longitude (W)	Path Term	Fly-By Fly-Over	True track / Mag track (°)	Distance (NM)	Upper limit / Lower limit (ft)	Speed limit (kts)	Remarks
RNAV 1	BUNED	523721.9 / 0063748.2	IF	-	-	-	FL200 / -	-	-
RNAV 1	DIRUM	530009.7 / 0063940.0	TF	Fly-By	357.2 / 359	22.9	-	-	-
RNAV 1	KANUS	530630.5 / 0062652.1	TF	Fly-By	050.5 / 052	10.0	-	220	Turn R
RNAV 1	BABON	531303.3 / 0063056.5	TF	Fly-By	339.5 / 341	7.0	FL070 / FL070	220	Turn L
RNAV 1	BIVDI	531059.5 / 0064005.6	TF	Fly-By	249.5 / 251	5.9	FL070 / FL070	220	Turn L
RNAV 1	DW754	531202.3 / 0064942.6	TF	Fly-By	280.3 / 282	5.9	FL070 / FL070	220	Turn R
RNAV 1	DW755	531554.2 / 0065704.5	TF	Fly-By	311.2 / 313	5.9	FL070 / FL070	220	Turn R
RNAV 1	OSLEX	532155.8 / 0064144.5	TF	Fly-By	056.6 / 058	11.0	- / +A5000	220	Turn R

**LIPGO 3R STAR RWY 10L/R**

**LIPG3R**

Nav. Spec.	WPT Name	Latitude (N) / Longitude (W)	Path Term	Fly-By Fly-Over	True track / Mag track (°)	Distance (NM)	Upper limit / Lower limit (ft)	Speed limit (kts)	Remarks
RNAV 1	LIPGO	530350.1 / 0053000.0	IF	-	-	-	-FL240 / -	-	-
RNAV 1	RUBAR	530808.9 / 0054805.4	TF	Fly-By	291.7 / 293	11.7	-	-	-
RNAV 1	DETAX	531430.7 / 0061235.6	TF	Fly-By	293.5 / 295	16.1	-	-	-
RNAV 1	BERMO	531738.9 / 0062450.8	TF	Fly-By	293.2 / 295	8.0	FL070 / FL070	220	-
RNAV 1	BABON	531303.3 / 0063056.5	TF	Fly-By	218.6 / 220	5.9	FL070 / FL070	220	Turn L
RNAV 1	BIVDI	531059.5 / 0064005.6	TF	Fly-By	249.5 / 251	5.9	FL070 / FL070	220	Turn R
RNAV 1	DW754	531202.3 / 0064942.6	TF	Fly-By	280.3 / 282	5.9	FL070 / FL070	220	Turn R
RNAV 1	DW755	531554.2 / 0065704.5	TF	Fly-By	311.2 / 313	5.9	FL070 / FL070	220	Turn R
RNAV 1	OSLEX	532155.8 / 0064144.5	TF	Fly-By	056.6 / 058	11.0	- / +A5000	220	Turn R

**NIMAT 3R STAR RWY 10L/R**

**NIMA3R**

Nav. Spec.	WPT Name	Latitude (N) / Longitude (W)	Path Term	Fly-By Fly-Over	True track / Mag track (°)	Distance (NM)	Upper limit / Lower limit (ft)	Speed limit (kts)	Remarks
RNAV 1	NIMAT	535754.1 / 0054431.7	IF	-	-	-	-FL240 / -	-	-
RNAV 1	EKREN	533843.0 / 0054553.1	TF	Fly-By	182.4 / 184	19.2	-	-	-
RNAV 1	ELBON	533534.1 / 0060921.6	TF	Fly-By	257.4 / 259	14.3	-	-	Turn R
RNAV 1	ASDER	533346.7 / 0062226.4	TF	Fly-By	257.1 / 259	8.0	FL080 / FL080	220	-
RNAV 1	AKIVA	533856.0 / 0062709.6	TF	Fly-By	331.5 / 333	5.9	FL080 / FL080	220	Turn R
RNAV 1	ADNAL	534153.9 / 0063541.5	TF	Fly-By	300.4 / 302	5.9	FL080 / FL080	220	Turn L
RNAV 1	APRUT	534149.0 / 0064534.9	TF	Fly-By	269.3 / 271	5.9	FL080 / FL080	220	Turn L
RNAV 1	DW865	533842.8 / 0065358.4	TF	Fly-By	238.1 / 240	5.9	FL080 / FL080	220	Turn L
RNAV 1	DW866	533329.1 / 0065827.2	TF	Fly-By	207.0 / 209	5.9	FL080 / FL080	220	Turn L
RNAV 1	IFBAP	533230.8 / 0064006.2	TF	Fly-By	095.0 / 097	11.0	- / +A4000	220	Turn L

16 MAY 2024

**NIRIF 1R STAR RWY 10L/R**

**NIRIIR**

Nav. Spec.	WPT Name	Latitude (N) / Longitude (W)	Path Term	Fly-By Fly-Over	True track / Mag track (°)	Distance (NM)	Upper limit / Lower limit (ft)	Speed limit (kts)	Remarks
RNAV 1	NIRIF	521755.9 / 0053404.3	IF	-	-	-	-FL240 / -	-	-
RNAV 1	DW100	524253.8 / 0053456.8	TF	Fly-By	358.8 / 000	25.0	-	-	-
RNAV 1	RUBAR	530808.9 / 0054805.4	TF	Fly-By	342.6 / 344	26.5	-	-	Turn L
RNAV 1	DETAX	531430.7 / 0061235.6	TF	Fly-By	293.5 / 295	16.1	-	-	Turn L
RNAV 1	BERMO	531738.9 / 0062450.8	TF	Fly-By	293.2 / 295	8.0	FL070 / FL070	220	-
RNAV 1	BABON	531303.3 / 0063056.5	TF	Fly-By	218.6 / 220	5.9	FL070 / FL070	220	Turn L
RNAV 1	BIVDI	531059.5 / 0064005.6	TF	Fly-By	249.5 / 251	5.9	FL070 / FL070	220	Turn R
RNAV 1	DW754	531202.3 / 0064942.6	TF	Fly-By	280.3 / 282	5.9	FL070 / FL070	220	Turn R
RNAV 1	DW755	531554.2 / 0065704.5	TF	Fly-By	311.2 / 313	5.9	FL070 / FL070	220	Turn R
RNAV 1	OSLEX	532155.8 / 0064144.5	TF	-	056.6 / 058	11.0	- / +A5000	220	Turn R

**OLAPO 3R STAR RWY 10L/R**

**OLAP3R**

Nav. Spec.	WPT Name	Latitude (N) / Longitude (W)	Path Term	Fly-By Fly-Over	True track / Mag track (°)	Distance (NM)	Upper limit / Lower limit (ft)	Speed limit (kts)	Remarks
RNAV 1	OLAPO	534649.0 / 0071741.0	IF	-	-	-	FL170 / -	-	-
RNAV 1	EPIDU	534903.5 / 0063554.8	TF	Fly-By	084.5 / 086	24.9	-	220	-
RNAV 1	ADNAL	534153.9 / 0063541.5	TF	Fly-By	178.9 / 180	7.2	FL080 / FL080	220	Turn R
RNAV 1	APRUT	534149.0 / 0064534.9	TF	Fly-By	269.3 / 271	5.9	FL080 / FL080	220	Turn R
RNAV 1	DW865	533842.8 / 0065358.4	TF	Fly-By	238.1 / 240	5.9	FL080 / FL080	220	Turn L
RNAV 1	DW866	533329.1 / 0065827.2	TF	Fly-By	207.0 / 209	5.9	FL080 / FL080	220	Turn L
RNAV 1	IFBAP	533230.8 / 0064006.2	TF	Fly-By	095.0 / 097	11.0	- / +A4000	220	Turn L

**OSGAR 3R STAR RWY 10L/R**

**OSGA3R**

Nav. Spec.	WPT Name	Latitude (N) / Longitude (W)	Path Term	Fly-By Fly-Over	True track / Mag track (°)	Distance (NM)	Upper limit / Lower limit (ft)	Speed limit (kts)	Remarks
RNAV 1	OSGAR	530257.9 / 0071612.8	IF	-	-	-	FL200 / -	-	-
RNAV 1	DIRUM	530009.7 / 0063940.0	TF	Fly-By	097.0 / 099	22.2	-	-	-
RNAV 1	KANUS	530630.5 / 0062652.1	TF	Fly-By	050.5 / 052	10.0	-	220	Turn L
RNAV 1	BABON	531303.3 / 0063056.5	TF	Fly-By	339.5 / 341	7.0	FL070 / FL070	220	Turn L
RNAV 1	BIVDI	531059.5 / 0064005.6	TF	Fly-By	249.5 / 251	5.9	FL070 / FL070	220	Turn L
RNAV 1	DW754	531202.3 / 0064942.6	TF	Fly-By	280.3 / 282	5.9	FL070 / FL070	220	Turn R
RNAV 1	DW755	531554.2 / 0065704.5	TF	Fly-By	311.2 / 313	5.9	FL070 / FL070	220	Turn R
RNAV 1	OSLEX	532155.8 / 0064144.5	TF	Fly-By	056.6 / 058	11.0	- / +A5000	220	Turn R

**SUTEX 3R STAR RWY 10L/R**

**SUTE3R**

Nav. Spec.	WPT Name	Latitude (N) / Longitude (W)	Path Term	Fly-By Fly-Over	True track / Mag track (°)	Distance (NM)	Upper limit / Lower limit (ft)	Speed limit (kts)	Remarks
RNAV 1	SUTEX	524927.7 / 0065549.3	IF	-	-	-	FL200 / -	-	-
RNAV 1	DIRUM	530009.7 / 0063940.0	TF	Fly-By	042.3 / 044	14.5	-	-	-
RNAV 1	KANUS	530630.5 / 0062652.1	TF	Fly-By	050.5 / 052	10.0	-	220	Turn R
RNAV 1	BABON	531303.3 / 0063056.5	TF	Fly-By	339.5 / 341	7.0	FL070 / FL070	220	Turn L
RNAV 1	BIVDI	531059.5 / 0064005.6	TF	Fly-By	249.5 / 251	5.9	FL070 / FL070	220	Turn L
RNAV 1	DW754	531202.3 / 0064942.6	TF	Fly-By	280.3 / 282	5.9	FL070 / FL070	220	Turn R
RNAV 1	DW755	531554.2 / 0065704.5	TF	Fly-By	311.2 / 313	5.9	FL070 / FL070	220	Turn R
RNAV 1	OSLEX	532155.8 / 0064144.5	TF	Fly-By	056.6 / 058	11.0	- / +A5000	220	Turn R

**VATRY 3R STAR RWY 10L/R**

**VATR3R**

Nav. Spec.	WPT Name	Latitude (N) / Longitude (W)	Path Term	Fly-By Fly-Over	True track / Mag track (°)	Distance (NM)	Upper limit / Lower limit (ft)	Speed limit (kts)	Remarks
RNAV 1	VATRY	523316.0 / 0053000.0	IF	-	-	-	-FL240 / -	-	-
RNAV 1	DW100	524253.8 / 0053456.8	TF	Fly-By	342.7 / 344	10.1	-	-	-
RNAV 1	RUBAR	530808.9 / 0054805.4	TF	Fly-By	342.6 / 344	26.5	-	-	-
RNAV 1	DETAX	531430.7 / 0061235.6	TF	Fly-By	293.5 / 295	16.1	-	-	Turn L
RNAV 1	BERMO	531738.9 / 0062450.8	TF	Fly-By	293.2 / 295	8.0	FL070 / FL070	220	-
RNAV 1	BABON	531303.3 / 0063056.5	TF	Fly-By	218.6 / 220	5.9	FL070 / FL070	220	Turn L
RNAV 1	BIVDI	531059.5 / 0064005.6	TF	Fly-By	249.5 / 251	5.9	FL070 / FL070	220	Turn R
RNAV 1	DW754	531202.3 / 0064942.6	TF	Fly-By	280.3 / 282	5.9	FL070 / FL070	220	Turn R
RNAV 1	DW755	531554.2 / 0065704.5	TF	Fly-By	311.2 / 313	5.9	FL070 / FL070	220	Turn R
RNAV 1	OSLEX	532155.8 / 0064144.5	TF	Fly-By	056.6 / 058	11.0	- / +A5000	220	Turn R

**Hold Identification – EIDW AD 2.24-23.1**

Holding Fix	Latitude (N) / Longitude (W)	Inbound True Track (°)	Inbound Mag Track (°)	Maximum Indicated Airspeed (kts)	Minimum Holding Altitude (ft)	Maximum Holding Level (FL)	Outbound time (min)	Direction of Turn
ADNAL	534153.9 / 0063541.5	300.5	302	220	+A5000	-FL140	1	R
BABON	531303.3 / 0063056.5	218.7	220	220	+A5000	-FL140	1	L
APRUT	534149.0 / 0064534.9	269.3	271	220	+A5000	-FL140	1	R