

— IRELAND —

**AIRAC**

Phone: +353 (0)61 703 750  
Fax: +353 (0)61 366 245  
AFS: EINNZPZX  
Email: [aisops@airnav.ie](mailto:aisops@airnav.ie)  
URL: <https://www.airnav.ie>



Aeronautical Information Service  
Ballycasey Cross  
Co. Clare  
V14 C446  
IRELAND

**AIP SUP: 001/2024**  
**Effective Date: 22-FEB-2024**  
**Publication Date: 11-JAN-2024**  
**End Date:**

---

## Weston Airport (EIWT) - Aeronautical Ground Lighting Installation

For a period of approximately twelve weeks, commencing in February 2024, work will be in progress on the installation of Aeronautical Ground Lighting (AGL) on Runway 07/25 and Taxiways A, B, C1, C2, C3, C4, D, E, F, G, H, J and K at Weston Airport.

The work consists of trenching, ducting and wiring of inset and surface-mounted runway and taxiway lights, PAPI systems and a runway lead-in lighting system for Runway 25.

The works will also involve the narrowing of all straight taxiway sections to a width of 11m, with provision of pavement fillets at taxiway intersections.

The work will be carried out in three general phases as detailed below and as depicted in the Appendix to this Supplement.

The sequence of phases may be altered to suit operational or construction requirements. The main phase (phase 2) will require the closure of the Airport for a period of approximately 3 weeks, during which most of the works on and in the vicinity of the runway are scheduled to take place.

Working hours in phases 1 and 3 are as indicated below.

Each taxiway closure will be delineated by red and white barriers and steady red obstacle lights.

Exact dates and times of work and withdrawal of facilities within each phase will be promulgated by NOTAM, with reference to this Supplement.

### Phase 1

Phase 1 will take approximately four weeks for completion.

This phase consists of preliminary works on taxiways A, B, C1, C2, C3 and C4 on a rolling schedule basis. Each taxiway will be withdrawn from service sequentially and alternative taxiway routings will be provided to maintain access to and from the runway.

The works may involve longer taxi distances and holding delays to ensure separation between departing and arriving aircraft. Aircraft may be required to backtrack the runway under ATC instruction.

It is expected that works during this phase will correspond to airport opening hours, with possible extensions after airport closure as required.

### Phase 2

Phase 2 will take approximately three weeks for completion.

During this phase, the airport will be closed to all traffic.

The principle works will be in the runway strip, however, some works will require the closure of link taxiways 'D', 'E', 'F', 'G', 'H', 'K' and 'J'.

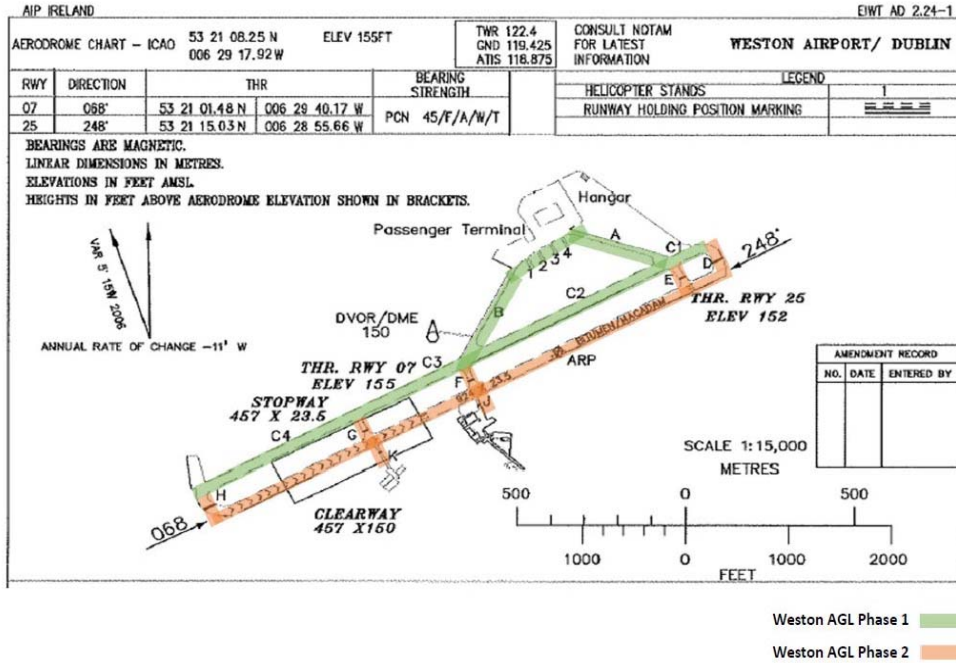
### **Phase 3**

Phase 3 will take approximately four weeks to complete.

Working hours will generally be during airport opening hours and is planned to involve closure of Runway 07/25 and sequential closures of all taxiways listed above to complete the installation and testing of light fittings.

The airport operating hours during this phase shall be limited to provide daylight hours for this work.

Appendix



Note: Phase 3 involves work on Runway 07/25 and all taxiways referenced in this Supplement.

THIS PAGE INTENTIONALLY LEFT BLANK