

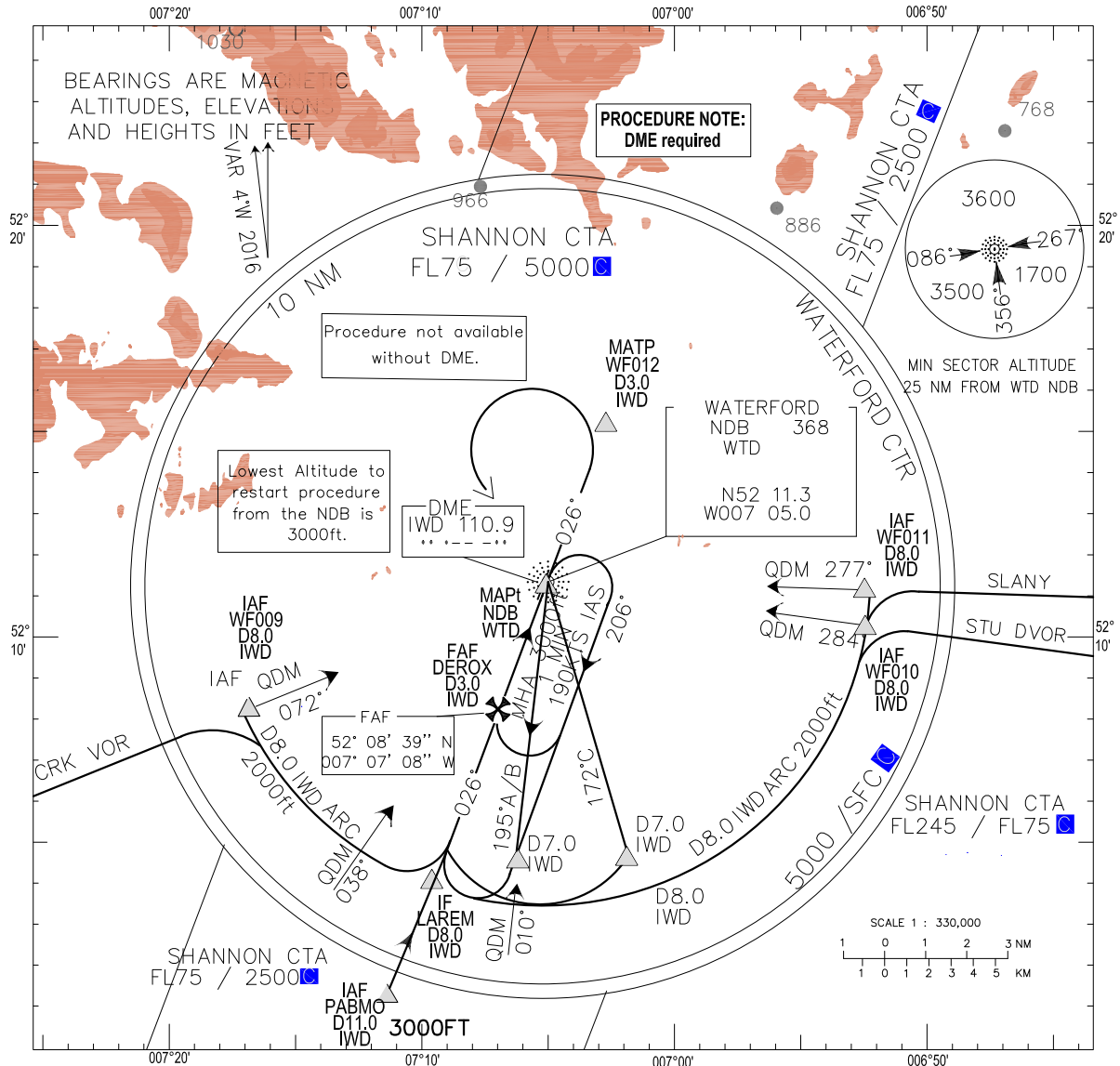
INSTRUMENT  
APPROACH  
CHART- ICAO

AERODROME ELEV 119 ft  
HEIGHTS RELATED TO  
THR RWY 03 - ELEV 86 ft

TWR 129.850  
ATIS 121.150  
Shannon 124.700

CONSULT NOTAM  
FOR LATEST  
INFORMATION

WATERFORD/WATERFORD  
NDB RWY 03  
(ACFT CAT A, B, C)



TRANSITION  
ALTITUDE 5000 ft

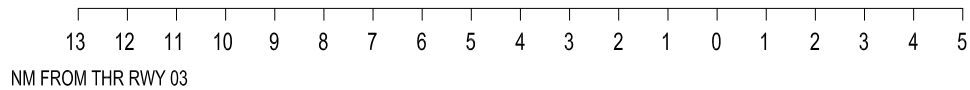
IAF PABMO D11.0 IWD 3000 (2914)	IF LAREM D8.0 Arc IWD 2000 (1914)	FAF DEROX D3.0 IWD 950 (864)	IAF/MAPt WTD NDB 3000 (2914)
---------------------------------------	---	------------------------------------	------------------------------------

MISSED APPROACH:  
No Turn before MAPt  
At the MAPt, climb on track 026° to D3.00 IWD,  
MAX 240 IAS turning left to WTD NDB Hold  
continuing climb to 3000ft or as instructed by ATC.

Change: General Revision.

DME Read D0.3 at THR RWY 03

ELEV 86 ft (THR RWY 03)



OCA (H)	A	B	C	Ideal Altitude (Height) on Final Approach									
				D3.0 IWD		D2.0 IWD		D1.0 IWD					
STRAIGHT-IN APPROACH	470 (383)			950 (864)		650 (564)		350 (264)					
VISUAL MANOEUVRING (These heights are AAL)	590 (471)	720 (601)	920 (801)	Ground speed			Kts	70	80	100	120	140	160
				Descent Rate 5.25%, (3°), 318 ft/NM		ft / min	350	400	500	600	700	800	

**RWY03 NDB Approach**

Descent Angle:	3.50'							
Fix	IAF WF009	IAF WF011	IAF WF010	IAF PABMO	IF LAREM	FAF DEROX	MAPt NDB WTD	MATP WF012
Fix Co-Ordinates	520826.0N 0071716.1W	5211104.7N 0065200.67	521013.2N 0065208.0W	520127.7N 0071248.4W	520409.4N 0071041.0W	520838.8N 0070708.1W	521120.4N 0070500.0W	521401.9N 0070251.7W
Fix formation Bearing °T	067.63 WTD	272.77 WTD	279.58 WTD	206.00 WTD	206.00 WTD	206.00 WTD	206.00 WTD	026.00 WTD
Fix Formation Distances	8.00 IWD	8.00 IWD	8.00 IWD	11.00 IWD	8.00 IWD	3.00 IWD	0.0 IWD	3.00 IWD

**Holding Identification: EIWF AD 2.24-6**

<i>Holding Fix</i>	<i>Latitude (N), Longitude (W)</i>	<i>Inbound True Track °T</i>	<i>Inbound Magnetic Track °M</i>	<i>Max Indicated Airspeed NM/h</i>	<i>Maximum/Minimum Holding Altitude/Level</i>	<i>Distance outbound (NM)</i>	<i>Direction of Turn</i>
NDB WTD	521120.4N/ 0070500.0W	022.0	026	190	FL100/ 3000ft	3.7	R