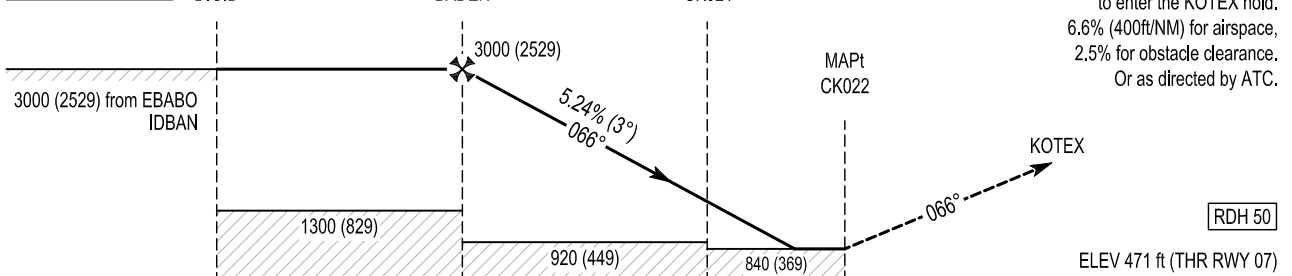


TRANSITION ALTITUDE 5000 ft



MISSED APPROACH:
Climb straight ahead to 4000ft to enter the KOTEX hold.
6.6% (400ft/NM) for airspace,
2.5% for obstacle clearance.
Or as directed by ATC.

RDH 50

ELEV 471 ft (THR RWY 07)

	15 14 13 12 11 10 9 8 7 6 5 4 3 2 1 0 1 2 3 4 5 6																									
OCA (H)	A							B								Recommended Profile on Final Approach										
LNAV	840 (369)															THR RWY 07	1	2	3	4	5	6	7			
LNAV / VNAV	722 (251)							732 (261)								ALT (HT)	840 (369)	1160 (689)	1475 (1004)	1795 (1324)	2115 (1644)	2430 (1959)	2750 (2279)			
LPV	722 (251)							732 (261)								Descent Rate 5.24%, (3°), 318 ft/NM					Kts	80	100	120	140	160
VISUAL MANOEUVRING (These heights are AAL)	960 (458)							1000 (498)													ft / min	425	530	640	745	850

CORK RNAV (GNSS) RWY 07 VIA EBABO

Navigation performance	Path descriptor	WPT Name	Latitude (N) / Longitude (W)	Fly-By or Fly-Over	Distance (nm)	True track / Magnetic track	Upper limit / Lower limit	Speed limit (kts)	VPA / TCH	Remarks
RNP APCH	IF	EBABO	513824.0 / 0084251.7	Fly-By	-	-	- / FL060	220	-	IAF
RNP APCH	TF	DIGID	514436.6 / 0084801.9	Fly-By	7.0	332.7 / 336	- / 3000	-220	-	IF
RNP APCH	TF	BADEN	514654.7 / 0084053.4	Fly-By	5.0	062.5 / 066	-	-	-	FAF
RNP APCH	TF	CK021	514912.5 / 0083346.0	Fly-By	5.0	062.5 / 066	-	-	-	SDF
RNP APCH	TF	CK022	515029.8 / 0082945.6	Fly-Over	2.8	062.5 / 066	-	-	3 / 50	MAPt
RNP APCH	TF	KOTEX	515355.9 / 0081901.7	Fly-By	7.5	062.6 / 066	-	220	-	MAHP

CORK RNAV (GNSS) RWY 07 VIA IDBAN

Navigation performance	Path descriptor	WPT Name	Latitude (N) / Longitude (W)	Fly-By or Fly-Over	Distance (nm)	True track / Magnetic track	Upper limit / Lower limit	Speed limit (kts)	VPA / TCH	Remarks
RNP APCH	IF	IDBAN	515048.9 / 0085313.6	Fly-By	-	-	- / FL060	220	-	IAF
RNP APCH	TF	DIGID	514436.6 / 0084801.9	Fly-By	7.0	152.5 / 156	- / 3000	220	-	IF
RNP APCH	TF	BADEN	514654.7 / 0084053.4	Fly-By	5.0	062.5 / 066	-	-	-	FAF
RNP APCH	TF	CK021	514912.5 / 0083346.0	Fly-By	5.0	062.5 / 066	-	-	-	SDF
RNP APCH	TF	CK022	515029.8 / 0082945.6	Fly-Over	2.8	062.5 / 066	-	-	3 / 50	MAPt
RNP APCH	TF	KOTEX	515355.9 / 0081901.7	Fly-By	7.5	062.6 / 066	-	220	-	MAHP

Hold Identification – EICK AD 2.24-24

Holding Fix	Latitude (N) / Longitude (W)	Inbound True Track (degrees)	Inbound Mag Track (degrees)	Maximum Indicated Airspeed (kts)	Maximum / Minimum Holding Altitude / Level (FL/ft)	Outbound Time (min)	Direction of Turn
BADEN	514654.7 / 0084053.4	062.4	066	220	FL080/3000	1	R
KOTEX	515355.9 / 0081901.7	242.7	246	220	FL080/3000	1	L

SBAS FAS Data Block Coding Data

Cork RNAV (GNSS) RWY 07

Input Data	
Parameters	Values
Operation Type	0
SBAS Provider	1
Airport Identifier	EICK
Runway	07
Runway Direction	0
Approach Performance Designator	0
Route Indicator	
Reference Path Data Selector	0
Reference Path Identifier	E07A
LTP/FTP Latitude	515029.7800N
LTP/FTP Longitude	0082945.5895W
LTP/FTP Ellipsoidal Height (metres)	201.1
FPAP Latitude	515049.2745N
Delta FPAP Latitude (seconds)	19.4945
FPAP Longitude	0082844.8395W
Delta FPAP Longitude (seconds)	60.7500
Threshold Crossing Height (feet)	50.0
TCH Units Selector	0
Glidepath Angle (degrees)	3.00
Course Width (metres)	105.00
Length Offset (metres)	0
HAL (metres)	40.0
VAL (metres)	50.0

Output Data	
Data Block	10 0B 03 09 05 07 00 00 01 37 30 05 28 7D 3F 16 15 9A 5A FC DB 1B 4D 98 00 9C DA 01 F4 01 2C 01 64 00 C8 FA 37 10 CE 7C
Calculated CRC Value	3710CE7C

Required Additional Data (not CRC wrapped)	
Parameters	Values
ICAO Code	EI
LTP/FTP Orthometric Height (metres)	143.6
FPAP Orthometric Height (metres)	152.8
SBAS EGNOS Channel	76871