

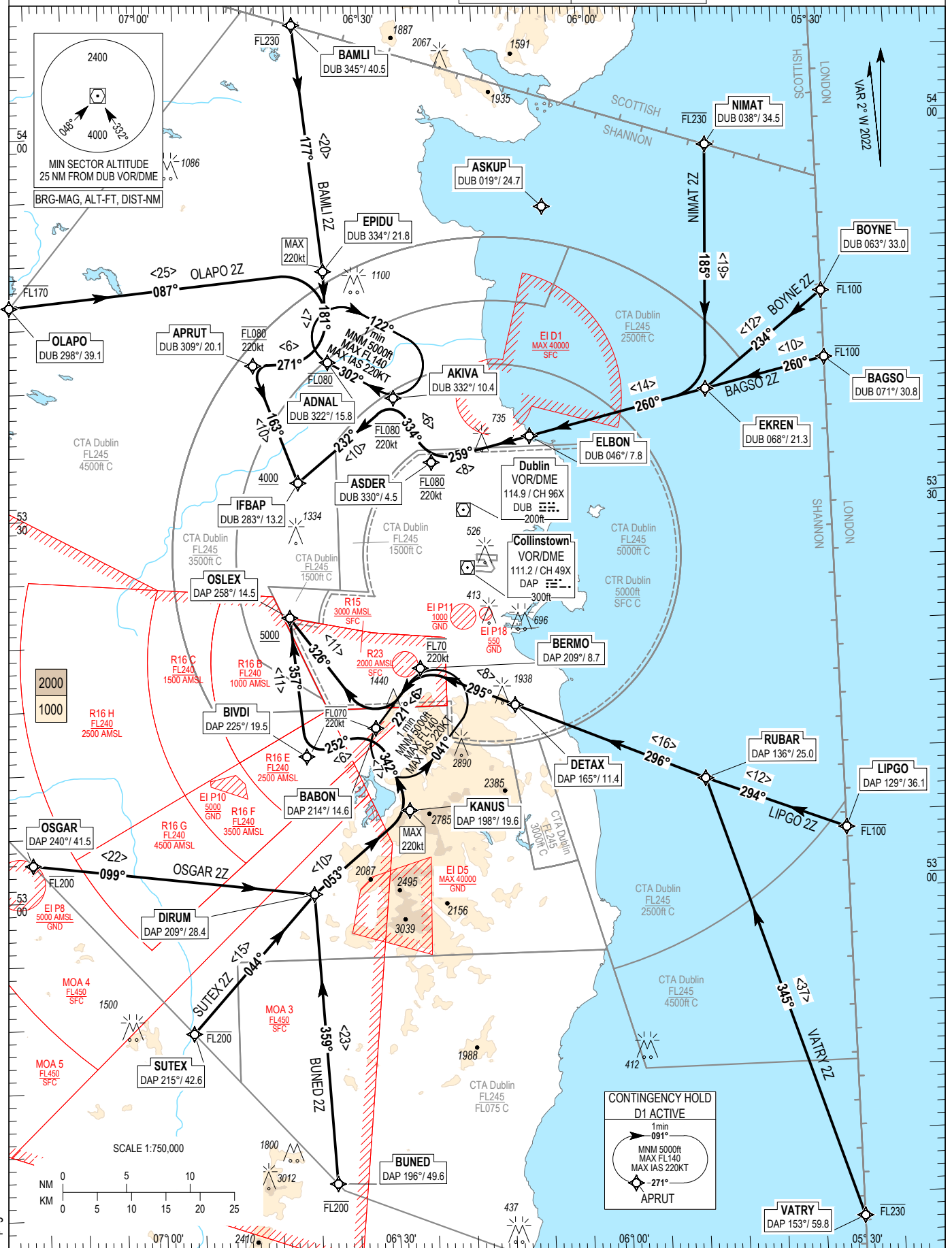
RNAV STANDARD ARRIVAL CHART
INSTRUMENT (STAR) - ICAO

TRANS ALT 5000ft
TRANS LEVEL by ATC

ATIS ARR	124.530	ACC Upper North	129.180
Dublin APP	121.100	ACC Upper South	135.655
		ACC Lower North	132.580
		ACC Lower South	120.755

DUBLIN RWY 10 L/R

NIMAT ZC, BOYNE ZC, BAGSO ZC, LIPGO ZC, VATRY ZC,
BUNED ZC, SUTEX ZC, OSGAR ZC, OLAPO ZC, BAMLI ZC



NOTES: 1. ASKUP may be used tactically by ATC to ensure aircraft routings are clear of EI D1. 2. DME/DME or GNSS navigation required.
 3. Aircraft routing via ASKUP that experience radio communication failure should follow the appropriate procedure for the arrival runway remaining clear of EI D1.
VERTICAL PLANNING INFORMATION: 1. ACTUAL DESCENT CLEARANCE WILL BE AS DIRECTED BY ATC.
CAUTION: 1. Pilots must inform ATC if unable to comply with any level or speed constraint.

CHANGE: Verso page and Grosscheck.

BAGS02Z STAR RWY 10L/R
BAGS2Z

Nav. Spec.	WPT Name	Latitude (N)/ Longitude (W)	Path Term	Fly-By Fly-over	True track / Mag track	Distance (NM)	Upper limit / Lower limit	Speed Limit (kts)	Remarks
RNAV1	BAGSO	534048.0 / 0053000.0	IF	-	-	-	-FL100 / -	-	-
RNAV1	EKREN	533843.0 / 0054553.1	TF	Fly-by	257.7 / 260	9.7	-	-	-
RNAV1	ELBON	533534.1 / 0060921.6	TF	Fly-by	257.4 / 260	14.3	-	-	-
RNAV1	ASDER	533346.7 / 0062226.4	TF	Fly-by	257.1 / 259	8.0	FL080 / FL080	220	-
RNAV1	AKIVA	533856.0 / 0062709.6	TF	Fly-by	331.5 / 334	5.9	FL080 / FL080	220	Turn R
RNAV1	IFBAP	533230.8 / 0064006.2	TF	Fly-by	230.3 / 232	10.0	- / +A4000	-	Turn L

BAML12Z STAR RWY 10L/R
BAML2Z

Nav. Spec.	WPT Name	Latitude (N)/ Longitude (W)	Path Term	Fly-By Fly-over	True track / Mag track	Distance (NM)	Upper limit / Lower limit	Speed Limit (kts)	Remarks
RNAV1	BAMLI	540828.5 / 0063904.0	IF	-	-	-	-FL230 / -	-	-
RNAV1	EPIDU	534903.5 / 0063554.8	TF	Fly-by	174.5 / 177	19.5	-	220	-
RNAV1	ADNAL	534153.9 / 0063541.5	TF	Fly-by	178.9 / 181	7.2	FL080 / FL080	220	Turn R
RNAV1	APRUT	534149.0 / 0064534.9	TF	Fly-by	269.3 / 271	5.9	FL080 / FL080	220	Turn R
RNAV1	IFBAP	533230.8 / 0064006.2	TF	Fly-by	160.7 / 163	9.9	- / +A4000	-	Turn L

BOYNE2Z STAR RWY 10L/R
BOYN2Z

Nav. Spec.	WPT Name	Latitude (N)/ Longitude (W)	Path Term	Fly-By Fly-over	True track / Mag track	Distance (NM)	Upper limit / Lower limit	Speed Limit (kts)	Remarks
RNAV1	BOYNE	534601.6 / 0053000.0	IF	-	-	-	-FL100 / -	-	-
RNAV1	EKREN	533843.0 / 0054553.1	TF	Fly-by	232.3 / 234	11.9	-	-	-
RNAV1	ELBON	533534.1 / 0060921.6	TF	Fly-by	257.4 / 260	14.3	-	-	Turn R
RNAV1	ASDER	533346.7 / 0062226.4	TF	Fly-by	257.1 / 259	8.0	FL080 / FL080	220	-
RNAV1	AKIVA	533856.0 / 0062709.6	TF	Fly-by	331.5 / 334	5.9	FL080 / FL080	220	Turn R
RNAV1	IFBAP	533230.8 / 0064006.2	TF	Fly-by	230.3 / 232	10.0	- / +A4000	-	Turn L

BUNED2Z STAR RWY 10L/R
BUNE2Z

Nav. Spec.	WPT Name	Latitude (N)/ Longitude (W)	Path Term	Fly-By Fly-over	True track / Mag track	Distance (NM)	Upper limit / Lower limit	Speed Limit (kts)	Remarks
RNAV1	BUNED	523721.9 / 0063748.2	IF	-	-	-	-FL200 / -	-	-
RNAV1	DIRUM	530009.7 / 0063940.0	TF	Fly-by	357.2 / 359	22.9	-	-	-
RNAV1	KANUS	530630.5 / 0062652.1	TF	Fly-by	050.5 / 053	10.0	-	220	Turn R
RNAV1	BABON	531303.3 / 0063056.5	TF	Fly-by	339.5 / 342	7.0	FL070 / FL070	220	Turn L
RNAV1	BIVDI	531059.5 / 0064005.6	TF	Fly-by	249.5 / 252	5.9	FL070 / FL070	220	Turn L
RNAV1	OSLEX	532155.8 / 0064144.5	TF	Fly-by	354.8 / 357	11.0	- / +A5000	-	Turn R

LIPGO2Z STAR RWY 10L/R
LIPG2Z

Nav. Spec.	WPT Name	Latitude (N)/ Longitude (W)	Path Term	Fly-By Fly-over	True track / Mag track	Distance (NM)	Upper limit / Lower limit	Speed Limit (kts)	Remarks
RNAV1	LIPGO	530350.1 / 0053000.0	IF	-	-	-	-FL100 / -	-	-
RNAV1	RUBAR	530808.9 / 0054805.4	TF	Fly-by	291.7 / 294	11.7	-	-	-
RNAV1	DETAX	531430.7 / 0061235.6	TF	Fly-by	293.5 / 296	16.1	-	-	-
RNAV1	BERMO	531738.9 / 0062450.8	TF	Fly-by	293.2 / 295	8.0	FL070 / FL070	220	-
RNAV1	BABON	531303.3 / 0063056.5	TF	Fly-by	218.6 / 221	5.9	FL070 / FL070	220	Turn L
RNAV1	OSLEX	532155.8 / 0064144.5	TF	Fly-by	324.0 / 326	11.0	- / +A5000	-	Turn R

NIMAT2Z STAR RWY 10L/R
NIMA2Z

Nav. Spec.	WPT Name	Latitude (N)/ Longitude (W)	Path Term	Fly-By Fly-over	True track / Mag track	Distance (NM)	Upper limit / Lower limit	Speed Limit (kts)	Remarks
RNAV1	NIMAT	535754.1 / 0054431.7	IF	-	-	-	-FL230 / -	-	-
RNAV1	EKREN	533843.0 / 0054553.1	TF	Fly-by	182.4 / 185	19.2	-	-	-
RNAV1	ELBON	533534.1 / 0060921.6	TF	Fly-by	257.4 / 260	14.3	-	-	Turn R
RNAV1	ASDER	533346.7 / 0062226.4	TF	Fly-by	257.1 / 259	8.0	FL080 / FL080	220	-
RNAV1	AKIVA	533856.0 / 0062709.6	TF	Fly-by	331.5 / 334	5.9	FL080 / FL080	220	Turn R
RNAV1	IFBAP	533230.8 / 0064006.2	TF	Fly-by	230.3 / 232	10.0	- / +A4000	-	Turn L

OLAPO2Z STAR RWY 10L/R
OLAP2Z

Nav. Spec.	WPT Name	Latitude (N)/ Longitude (W)	Path Term	Fly-By Fly-over	True track / Mag track	Distance (NM)	Upper limit / Lower limit	Speed Limit (kts)	Remarks
RNAV1	OLAPO	534649.0 / 0071740.6	IF	-	-	-	-FL170 / -	-	-
RNAV1	EPIDU	534903.5 / 0063554.8	TF	Fly-by	084.5 / 087	24.9	-	220	-
RNAV1	ADNAL	534153.9 / 0063541.5	TF	Fly-by	178.9 / 181	7.2	FL080 / FL080	220	Turn R
RNAV1	APRUT	534149.0 / 0064534.9	TF	Fly-by	269.3 / 271	5.9	FL080 / FL080	220	Turn R
RNAV1	IFBAP	533230.8 / 0064006.2	TF	Fly-by	160.7 / 163	9.9	- / +A4000	-	Turn L

OSGAR2Z STAR RWY 10L/R
OSGA2Z

Nav. Spec.	WPT Name	Latitude (N)/ Longitude (W)	Path Term	Fly-By Fly-over	True track / Mag track	Distance (NM)	Upper limit / Lower limit	Speed Limit (kts)	Remarks
RNAV1	OSGAR	530257.9 / 0071612.8	IF	-	-	-	-FL200 / -	-	-
RNAV1	DIRUM	530009.7 / 0063940.0	TF	Fly-by	097.0 / 099	22.2	-	-	-
RNAV1	KANUS	530630.5 / 0062652.1	TF	Fly-by	050.5 / 053	10.0	-	220	Turn L
RNAV1	BABON	531303.3 / 0063056.5	TF	Fly-by	339.5 / 342	7.0	FL070 / FL070	220	Turn L
RNAV1	BIVDI	531059.5 / 0064005.6	TF	Fly-by	249.5 / 252	5.9	FL070 / FL070	220	Turn L
RNAV1	OSLEX	532155.8 / 0064144.5	TF	Fly-by	354.8 / 357	11.0	- / +A5000	-	Turn R

SUTEX2Z STAR RWY 10L/R
SUTEZZ

Nav. Spec.	WPT Name	Latitude (N)/ Longitude (W)	Path Term	Fly-By Fly-over	True track / Mag track	Distance (NM)	Upper limit / Lower limit	Speed Limit (kts)	Remarks
RNAV1	SUTEX	524927.7 / 0065549.3	IF	-	-	-	-FL200 / -	-	-
RNAV1	DIRUM	530009.7 / 0063940.0	TF	Fly-by	042.3 / 044	14.5	-	-	-
RNAV1	KANUS	530630.5 / 0062652.1	TF	Fly-by	050.5 / 053	10.0	-	220	Turn R
RNAV1	BABON	531303.3 / 0063056.5	TF	Fly-by	339.5 / 342	7.0	FL070 / FL070	220	Turn L
RNAV1	BIVDI	531059.5 / 0064005.6	TF	Fly-by	249.5 / 252	5.9	FL070 / FL070	220	Turn L
RNAV1	OSLEX	532155.8 / 0064144.5	TF	Fly-by	354.8 / 357	11.0	- / +A5000	-	Turn R

VATRY2Z STAR RWY 10L/R
VATR2Z

Nav. Spec.	WPT Name	Latitude (N)/ Longitude (W)	Path Term	Fly-By Fly-over	True track / Mag track	Distance (NM)	Upper limit / Lower limit	Speed Limit (kts)	Remarks
RNAV1	VATRY	523316.0 / 0053000.0	IF	-	-	-	-FL230 / -	-	-
RNAV1	RUBAR	530808.9 / 0054805.4	TF	Fly-by	342.7 / 345	36.6	-	-	-
RNAV1	DETAX	531430.7 / 0061235.6	TF	Fly-by	293.5 / 296	16.1	-	-	Turn L
RNAV1	BERMO	531738.9 / 0062450.8	TF	Fly-by	293.2 / 295	8.0	FL070 / FL070	220	-
RNAV1	BABON	531303.3 / 0063056.5	TF	Fly-by	218.6 / 221	5.9	FL070 / FL070	220	Turn L
RNAV1	OSLEX	532155.8 / 0064144.5	TF	Fly-by	324.0 / 326	11.0	- / +A5000	-	Turn R

Hold Identification – EIDW AD 2.24-23.5

Holding Fix	Latitude (N) / Longitude (W)	Inbound True Track (degrees)	Inbound Mag Track (degrees)	Maximum Indicated Airspeed (kts)	Maximum / Minimum Holding Altitude/Level (FL/ft)	Limiting outbound time (min)	Direction of Turn
ADNAL	534153.9 / 0063541.5	300.4	302	220	FL140 / A5000	1	R
BABON	531303.3 / 0063056.5	218.7	221	220	FL140 / A5000	1	L
APRUT	534149.0 / 0064534.9	269.3	271	220	FL140 / A5000	1	R