

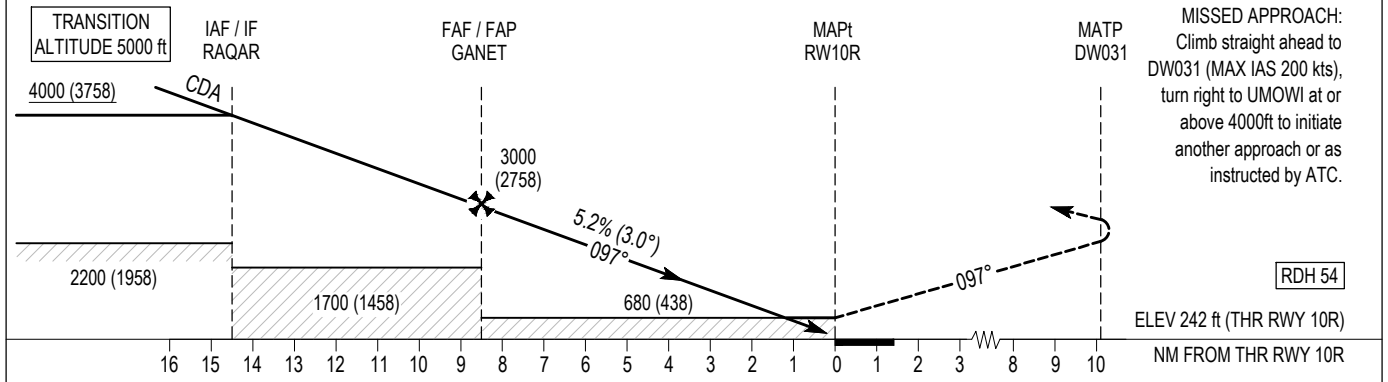
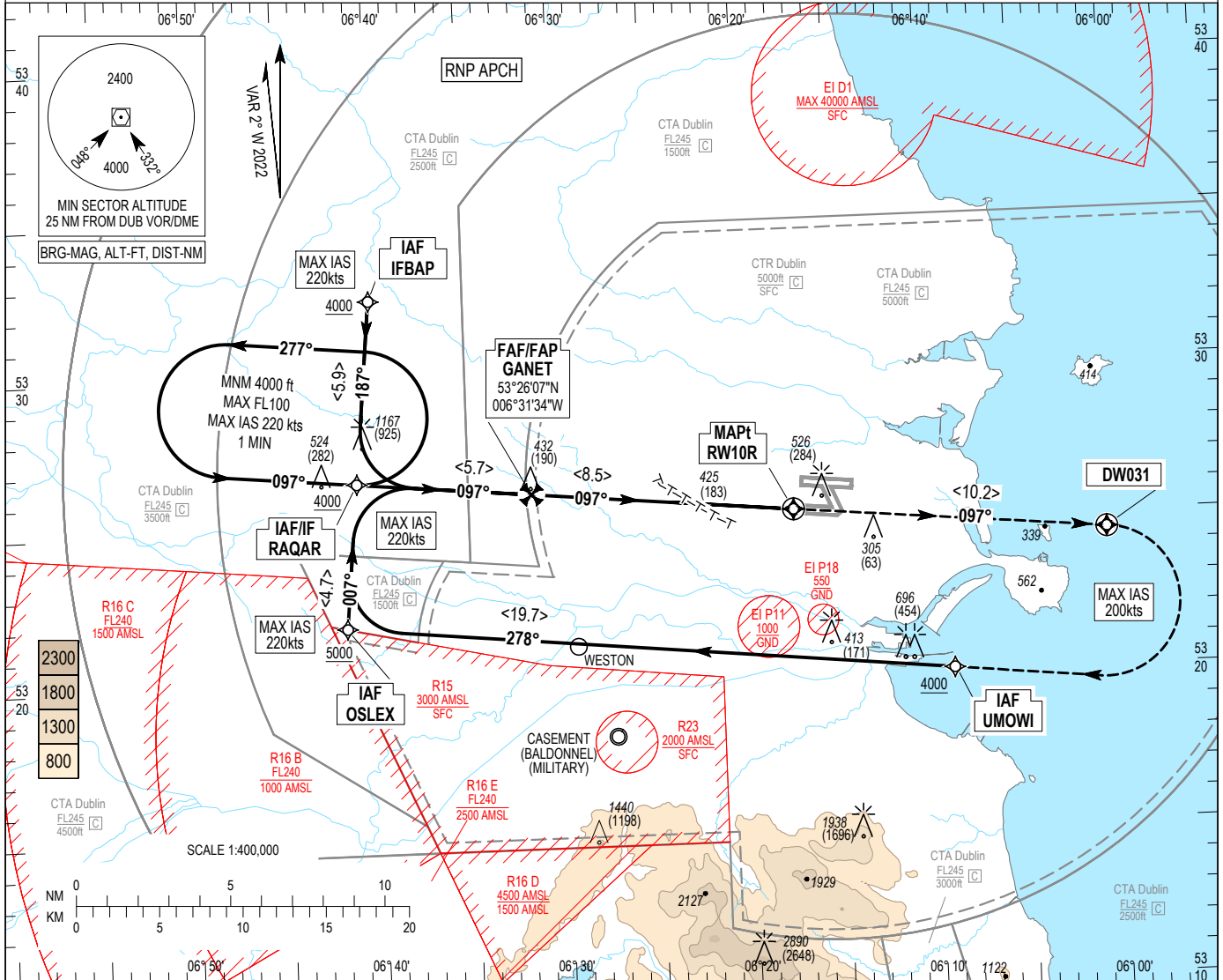
INSTRUMENT  
APPROACH  
CHART- ICAO

AERODROME ELEV 243 ft  
HEIGHTS RELATED TO  
THR RWY 10R - ELEV 242 ft

ATIS ARR 124.530  
APP 121.100  
FINALS 119.930  
TWR STH 118.600  
GND STH 121.800

SBAS  
CH 41225  
E10A

DUBLIN/DUBLIN  
RNP RWY 10R  
(ACFT CAT A, B, C, D)  
MNM TEMP -10°C (BARO VNAV)  
MAX TEMP 50°C (BARO VNAV)



OCA (H)	A	B	C	D
	2200 (1958)	1700 (1458)	3000 (2758)	680 (438)
LNAV	680 (438)			
LNAV / VNAV	530 (288)	540 (298)	560 (318)	590 (348)
LPV	566 (324)	576 (334)	585 (343)	595 (353)
Visual Manoeuvring (Heights AAL)	830 (588)		1100 (858)	

**NOTE:**  
1. Pilots should request RNP Approach on first contact with APCH.  
2. Motorway running almost parallel with RWY 10R/28L, 0.6NM to South of RWY.

Recommended LNAV Profile on Final Approach

DIST from THR (NM)	8	7	6	5	4	3	2
ALT / HT (ft)	2845 (2603)	2525 (2283)	2205 (1963)	1890 (1648)	1570 (1328)	1250 (1008)	935 (693)
Ground Speed	fts	80	100	110	120	140	160
Descent rate gradient - 5.2% (3.0°) 318 ft/NM	ft / min	430	530	580	640	740	850

CHANGE: AD elevation, RAQAR label, Profile, Notes.

**Dublin RNP RWY10R via UMOWI**

Nav. Spec.	WPT Name	Latitude (N)/ Longitude (W)	Path Term	Fly-By Fly-over	True track / Mag track	Distance (NM)	Upper limit / Lower limit	Speed Limit (kts)	VPA (°) / TCH (ft)	Remarks
RNP APCH	UMOWI	532002.9 / 0060859.1	IF	-	-	-	- / +A4000	-	-	-
RNP APCH	OSLEX	532155.8 / 0064144.5	TF	Fly-By	275.7 / 278	19.7	- / +A4000	220	-	-
RNP APCH	RAQAR	532636.1 / 0064101.2	TF	Fly-By	005.3 / 007	4.7	- / +A4000	220	-	R
RNP APCH	GANET	532606.5 / 0063133.8	TF	Fly-By	094.9 / 097	5.7	-	-	-	R
RNP APCH	RW10R	532520.7 / 0061724.3	TF	Fly-Over	095.1 / 097	8.5	-	-	3.00 / 54	-
RNP APCH	DW031	532425.9 / 0060029.2	CF	Fly-Over	095.1 / 097	10.2	-	200	-	-
RNP APCH	UMOWI	532002.9 / 0060859.1	DF	Fly-By	-	-	- / +A4000	200	-	R

**Dublin RNP RWY10R via OSLEX**

Nav. Spec.	WPT Name	Latitude (N)/ Longitude (W)	Path Term	Fly-By Fly-over	True track / Mag track	Distance (NM)	Upper limit / Lower limit	Speed Limit (kts)	VPA (°) / TCH (ft)	Remarks
RNP APCH	OSLEX	532155.8 / 0064144.5	IF	-	-	-	- / +A5000	220	-	-
RNP APCH	RAQAR	532636.1 / 0064101.2	TF	Fly-By	005.3 / 007	4.7	- / +A4000	220	-	-
RNP APCH	GANET	532606.5 / 0063133.8	TF	Fly-By	094.9 / 097	5.7	-	-	-	R
RNP APCH	RW10R	532520.7 / 0061724.3	TF	Fly-Over	095.1 / 097	8.5	-	-	3.00 / 54	-
RNP APCH	DW031	532425.9 / 0060029.2	CF	Fly-Over	095.1 / 097	10.2	-	200	-	-
RNP APCH	UMOWI	532002.9 / 0060859.1	DF	Fly-By	-	-	- / +A4000	200	-	R

**Dublin RNP RWY10R via RAQAR**

Nav. Spec.	WPT Name	Latitude (N)/ Longitude (W)	Path Term	Fly-By Fly-over	True track / Mag track	Distance (NM)	Upper limit / Lower limit	Speed Limit (kts)	VPA (°) / TCH (ft)	Remarks
RNP APCH	RAQAR	532636.1 / 0064101.2	IF	-	-	-	- / +A4000	220	-	-
RNP APCH	GANET	532606.5 / 0063133.8	TF	Fly-By	094.9 / 097	5.7	-	-	-	-
RNP APCH	RW10R	532520.7 / 0061724.3	TF	Fly-Over	095.1 / 097	8.5	-	-	3.00 / 54	-
RNP APCH	DW031	532425.9 / 0060029.2	CF	Fly-Over	095.1 / 097	10.2	-	200	-	-
RNP APCH	UMOWI	532002.9 / 0060859.1	DF	Fly-By	-	-	- / +A4000	200	-	R

**Dublin RNP RWY10R via IFBAP**

Nav. Spec.	WPT Name	Latitude (N)/ Longitude (W)	Path Term	Fly-By Fly-over	True track / Mag track	Distance (NM)	Upper limit / Lower limit	Speed Limit (kts)	VPA (°) / TCH (ft)	Remarks
RNP APCH	IFBAP	533230.8 / 0064006.2	IF	-	-	-	- / +A4000	220	-	-
RNP APCH	RAQAR	532636.1 / 0064101.2	TF	Fly-By	185.3 / 187	5.9	- / +A4000	220	-	-
RNP APCH	GANET	532606.5 / 0063133.8	TF	Fly-By	094.9 / 097	5.7	-	-	-	L
RNP APCH	RW10R	532520.7 / 0061724.3	TF	Fly-Over	095.1 / 097	8.5	-	-	3.00 / 54	-
RNP APCH	DW031	532425.9 / 0060029.2	CF	Fly-Over	095.1 / 097	10.2	-	200	-	-
RNP APCH	UMOWI	532002.9 / 0060859.1	DF	Fly-By	-	-	- / +A4000	200	-	R

**Hold Identification – RAQAR**

Holding Fix	Latitude (N) / Longitude (W)	Inbound True Track (degrees)	Inbound Mag Track (degrees)	Maximum Indicated Airspeed (kts)	Minimum Holding Altitude/ Level (FL/ft)	Maximum Holding Altitude/ Level (FL/ft)	Outbound time (min)	Direction of Turn
RAQAR	532636.1 / 0064101.2	094.8	097	220	+A4000	-FL100	1	L

**SBAS FAS Data Block Coding Data**  
**Dublin RNP RWY10R**

<b>Input Data</b>	
Operation Type	0
Service Provider	1 (EGNOS)
Airport Identifier	EIDW
Runway	10
Runway Letter	1 (R)
Approach Performance Designator	0
Route Indicator	
Reference Path Data Selector	0
Reference Path Identifier	E10A
LTP / FTP Latitude	532520.7500N
LTP / FTP Longitude	0061724.2700W
LTP / FTP Ellipsoidal Height	130.3 m
FPAP Latitude	532512.7035N
Delta FPAP Latitude	-8.0465 seconds
FPAP Longitude	0061457.2460W
Delta FPAP Longitude	147.0240 seconds
Threshold Crossing Height	54
TCH Units Selector	0 (feet)
Glidepath Angle	3 °
Course Width	105 m
Length Offset	96 m
HAL	40 m
VAL	35 m
<b>Output Data</b>	
Data Block	10 17 04 09 05 4A 00 00 01 30 31 05 DC 29 ED 16 A4 F3 4C FD 17 19 23 C1 FF A0 7C 04 1C 02 2C 01 64 0C C8 AF E6 8A 58 DA
Calculated CRC Value	E68A58DA
<b>Required Additional Data</b>	
ICAO Code	EI
LTP/FTP Orthometric Height	73.8 m
SBAS EGNOS Channel	41225